

2021-2022 TK-12 English Learner Instruction Micro-Credentialing Program

Leading the Way in Transformational Leadership for English Learner Instruction



English Learner Micro-Credentialing

The TK-12 EL Micro-Credential Program at a Glance:

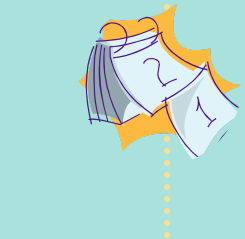
- A three salary point class consisting of three courses of two modules each completed over the span of one academic year.
- Course content is delivered using a blended learning approach that includes both instructor-led, face-to-face and high quality eLearning content.
- Teachers engage as part of a community of practice and produce Evidence of Learning Artifacts to be delivered and reflected upon.

Synchronous Learning Dates

- August 28, 2021
- October 16, 2021
- December 11, 2021
- February 26, 2022
- April 23, 2022

EL Micro-Credential participants will be able to:

- Deeply understand the English Language Development Standards, California Content Standards, the English Language Arts/English Language Development Framework for California Public Schools, California English Learner Roadmap, 2018 Master Plan for English Learners and Standard English Learners, and implications of standards and shifts on teaching and learning in a 21st Century English Learner classroom.
- Design and deliver rigorous English Learner assessments to demonstrate growth in content areas & English Language Assessments for California (ELPAC).
- Leverage instructional technology to create and deliver English Learners progression of learning with high impact instructional strategies to enhance learning and student outcomes.



Application Information:

For more information about the TK-12 English Learner micro-credentialing program and to apply, please visit the L.A. Unified Micro-Credentialing Program Website:
<https://bit.ly/LAUnifiedMicrocredentialingPrograms>

- July 21, 2021: Applications Open: <http://bit.ly/21-22-english-learner-micro-info-application>
- August 20, 2021: Applications Window Closes
- August 23, 2021: Acceptance Notifications Sent
- August 28, 2021: Program Begins

For more information, contact Cynthia Ramirez-Roussel, Elementary Specialist at cmr0096@lausd.net